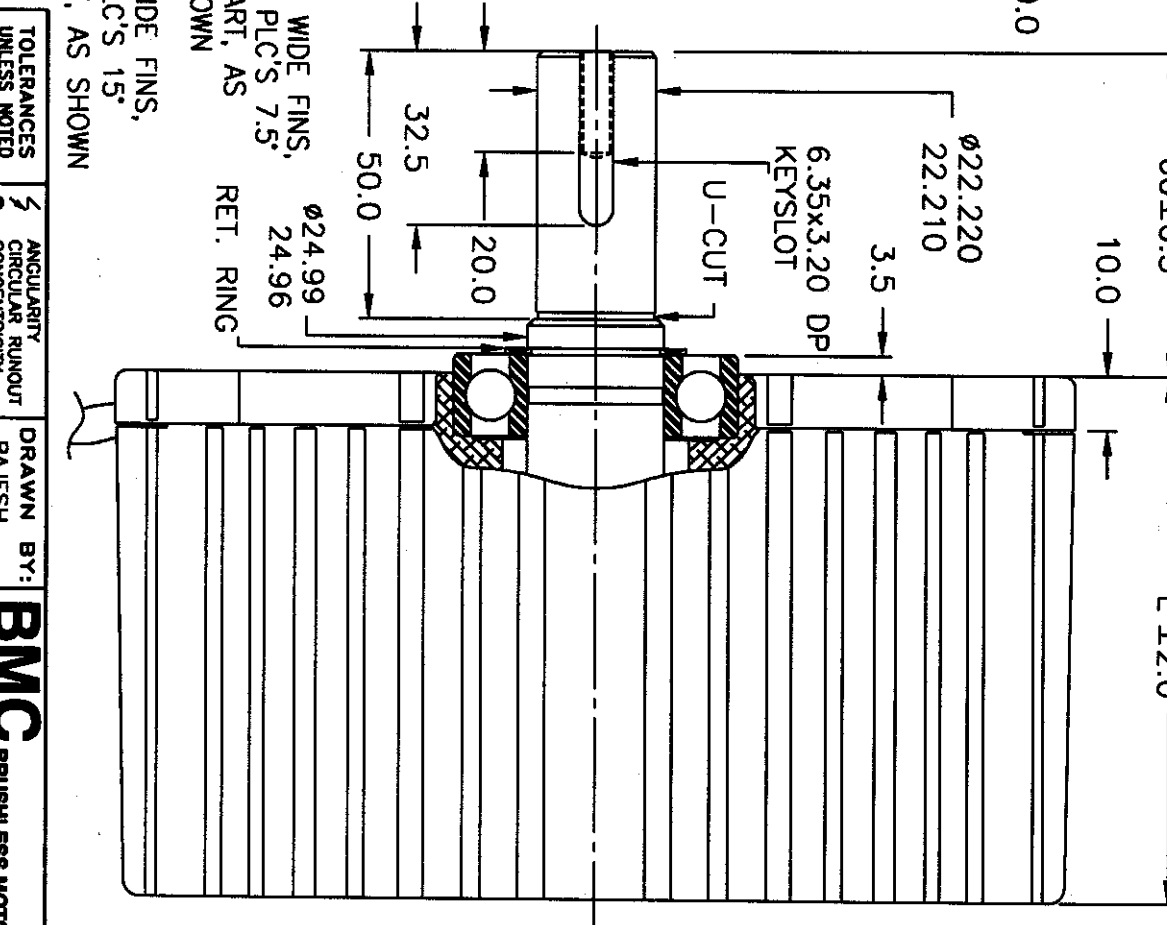
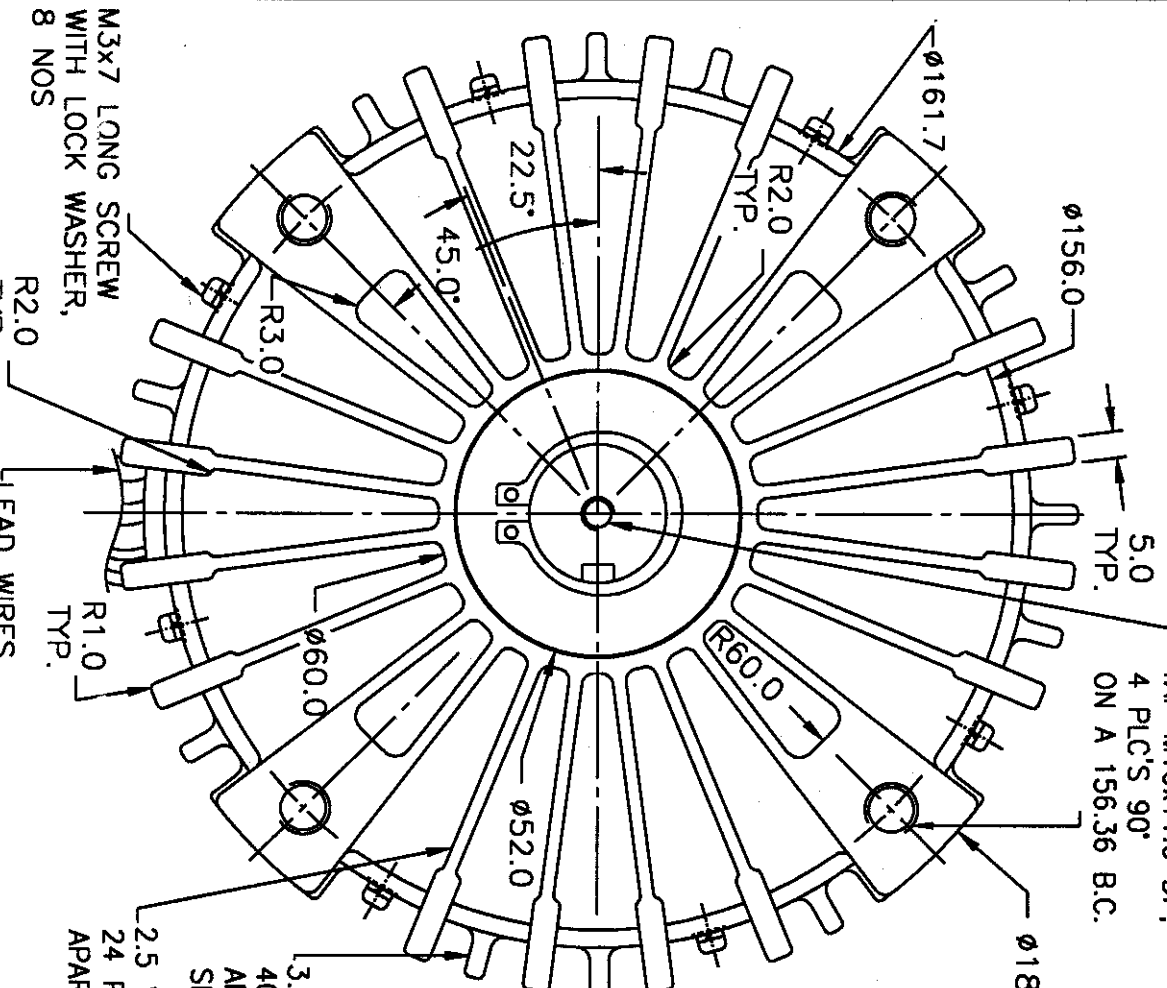


NOTE: THIS IS CONFIDENTIAL PROPERTY OF BMC. IT IS NOT TO BE COPIED OR DUPLICATED IN ANY MANNER AND SHALL NOT BE SUBMITTED TO OUTSIDE PARTIES WITHOUT OUR WRITTEN CONSENT.

PART NO.	'L'	RATED POWER
13130-1	78.0	1000 WATTS
-2	100.0	2000 WATTS
-3	121.0	3000 WATTS



REV.	DATE	BY	ECN	REMARKS	CK

- NOTE:  
 1. CONTROLLER MOUNTED INSIDE THE MOTOR.  
 2. ALL DIMENSIONS ARE IN MM.

<b>TOLERANCES UNLESS NOTED</b> .0 ±.25 .00 ±.13 (X) REF. DIM.		<b>ANGULARITY</b> ◻ CIRCULAR RUNOUT ◻ PERPENDICULARITY ◻ (X) REFERENCE DIM. DIAMETER		<b>DRAWN BY:</b> RAJESH		<b>DATE:</b> 08 MAR. 2003	
<b>MATERIAL</b>		<b>CHECKED BY:</b> SCN		<b>BMC BRUSHLESS MOTOR CO.</b> 7625 International Ave., Suite 21, Van Nuys, CA 91410, USA		<b>13130C</b>	
<b>MOTOR OUTLINE (58FRAME)</b> LAWN MOWER				<b>REV.</b>			